

WATCH

BRICK

SPECIAL EFFECTS

Designers and architects often use brick to create features traditionally reserved for wood. Builder and designer Keith Rogers chose brick to fashion a wooden-style pediment on this house in Winston-Salem, NC (1b). This maintenance-free design, all constructed of standard brick shapes, frames the imposing circle-top window over the entrance.

CONTINUED PAGE 2

A Bonded Keyed Jack Arch adds length and visual appeal to this window design. Sill Brick with Returns complete the custom look. (1a)



1b

Two rows of brick headers embrace this window, which sits atop a band of Rowlock and Soldier Courses. (1c)



1a



1c

Introduction: Here Comes The Sun

It is commonly said that the eyes are the windows to a person's soul. When it comes to creating a distinctive home or commercial building design with brick, builders and architects can easily make the windows the soul of the building. The way light enters a structure has an enormous impact on the environment within. The placement and design of windows from the outside reinforce the overall architectural theme of any project.

Building with brick means freedom and flexibility when creating window designs. From massive skylights to intimate picture windows, the possibilities for window treatments are limited only by imagination. Whether capped with a distinctive arch, framed by a Header Course or recessed into the wall, a unique, expressive window design is easy to achieve with brick.

A simple, understated window design can balance out an intricate brick facade, while an elaborate design rich in brick details can add grandeur to a subtle architectural theme. Brick details can frame an elegant design, elongate or enlarge small windows, and enhance the composition of any structure, creating a personal statement that communicates the vision of those who created it.



“The best window designs combine form and function.”

SPECIAL EFFECTS

CONTINUED FROM PAGE 1

Each of the three Rowlock Courses over the window are corbeled out to give a relief effect. Stacked half-round Wall Cap Coping Brick create the columns, which are joined on both top and bottom with Watertable Brick.

The New Concept Arches over the other windows are corbeled out from the brick facade, with the brick key corbeled out further. This relieving of brick details creates shadowing that emphasizes the lines of the architectural design, according to Rogers.

“The beauty of using brick shapes is that it’s a big kid’s Lego. Watertables, Rowlocks, Copings — it’s just a matter of how you put it together.”

The flared shape of the Jack Arch is an ideal link to the corbeled brick veneer on the second level of this home. (2d)



2b



2c



2a



2d



2e

Framing windows with a darker shade of brick provides texture and dimension to this home’s design. Jack Arches lead the eye toward an elegant roofline. (2e)



BRYAN GARDNER
BUILDER/DESIGNER

“I prefer doing interesting brickwork around windows instead of shutters. It’s a nice, fancy feature.”



3d



3b



3c

DEFINING LINES

The creative use of brick, combined with elegant shapes and intricate design, makes the windows the visual centerpiece of this home in Greensboro, NC (3a,b,c).

Each window is surrounded by two Rowlock Courses — one flush with the home’s facade, and the other corbeled out above it. This framing technique defines the graceful lines of the windows and gives the home a friendly, welcoming feel. Bryan Gardner, the home’s designer, says, “The way the windows were done really makes the house jump out at you and catches your attention.”



3a



3e

With brick, builders can introduce several window styles into one design, as in this home in Aiken, SC. All rectangular windows are capped by Jack Arches (3e), while Unbonded Elliptical Arches define the shaped windows on the dormers and front facade. (4b)

“An effective brick window design is a perfect way to manipulate the dramatic effects of light.”

4a

Most traditional features, like stone or clay keys, can be replaced with brick.



From traditional to contemporary, a variety of window shapes, sizes and styles are easily achieved when framed in brick details.

4b



4c

A broad spectrum of window shapes and arch styles truly defines this home's architectural theme. (4c)

DRESS UP YOUR WINDOWS WITH ARCHES

Whether simple or elaborate, an arch is a classic feature that allows designers to make the most of their windows by expressing various architectural styles and themes.

Arches are constructed with the aid of temporary forming or centering which must carry dead loads until the arch has gained sufficient strength to support itself and other superimposed loads. Generally, forms should remain in place at least 10 days after all masonry work that will be supported by the arch is completed. To simplify construction of Flat or Jack Arches, a steel angle (lintel) is sometimes used as a permanent form in brick veneer construction.

It is important that all mortar joints are completely filled, since joints are vital in maintaining the compression ring or wedging effect of the arch.



THE DETAILS

WATCH



MARLEY CARROLL,
ODELL ASSOCIATES, INC.

“People like brick. It’s solid, and that makes it a competitive material.”

-MARLEY CARROLL

HISTORY WITHIN A METROPOLIS

The American City Building, (5a), located in Charlotte, NC, lies on the corridor that separates downtown, with its tall office buildings, and the historic South End. “One of the themes we were going for was to mediate between the new downtown buildings and the warehouses of the South End — to offer a transition between the two,” says Marley Carroll of Odell Associates, Inc.

The numerous “punch” windows with untinted glass offer a nostalgic and friendly feel, while the cream-colored brick accenting the windows and the glass-enclosed conference rooms on each corner of the building give a distinct metropolitan flavor.

A small round window in a brick facade adds a playful, cozy touch to any design. (5c)

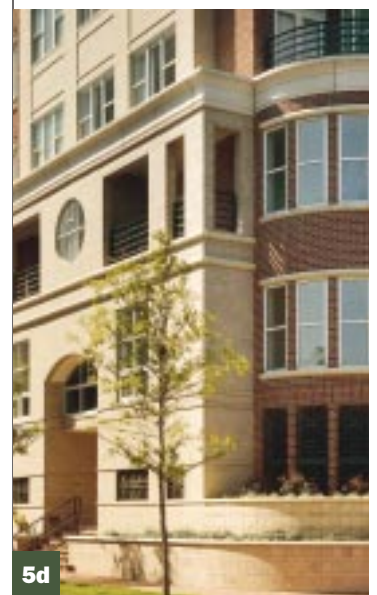


5a



5b

Custom-sized accent brick creates an oversized Jack Arch that spans two large window sections on this municipal building. (5b)



5d

This mixed-use building utilizes various bond patterns and window designs to unify adjacent historic and urban districts. (5d)



5c



**BRICK
ASSOCIATION
OF THE
CAROLINAS**

Boral Bricks, Inc.
Boren Brick
Carolina Ceramics
Cherokee Sanford Brick
Cunningham Brick Co., Inc.
General Shale—Hanford Division
Lee Brick & Tile Co., Inc.
New London Brick Works
Old Carolina Brick Co.
Palmetto Brick Co.
Pine Hall Brick Co., Inc.
Richtex Corporation
Statesville Brick Co.
Taylor Clay Products Co.
Triangle Brick

800.62.BRICK

Suite 800
8420 University
Executive Park
Charlotte, NC
28262

www.gobrick.com

Focus
On
**Window
Treatments**

**THE LIGHT
CALLED LEARNING**

For this public library in Greensboro, NC, brick was the material of choice (6a-b). The variation in bonding patterns — Standard Running Bond with alternating sections of Soldier Courses — provide a solid visual foundation for the clerestory windows at the top of the building. These skylights double as a beacon after dark for nighttime visitors.

“The neat thing about brick is that it’s a common material that can be combined to create custom details,” says architect J. Andrew Sykes of Greensboro, NC.

Horizontal banding symbolizes books on the library’s numerous shelves. (6a,b)



6a



6c



6b

A geometric pattern of colorful brick tops off each plateau, breaking down the height of this medical center’s enormous glass entrance. (6c)

KUDOS

1a Private residence, Treyburn subdivision, Durham, NC; Designer: Design Tech, Inc., Raleigh, NC; Builder: William Carden Associates, Durham, NC; Mason: Washington & Kelly Masonry, Hillsboro, NC.

1b Private residence, Winston-Salem, NC; Builder: Keith Rogers Homes, Inc., Winston-Salem, NC; Mason: Espinal Masonry, Inc., Winston-Salem, NC.

1c Private residence, Chapel Hill, NC.

2a-c Private residence, Ascot Estates, Irmo, SC; Builder: Sovereign Homes Limited, Irmo, SC; Mason: McGee Brothers Company, Inc., Monroe, NC.

2d Private residence, Greenville, SC; Designer: Traditional Concepts, Greenville, SC; Builder: C&D Builders, Simpsonville, SC; Mason: Larry McMakin, Greenville, SC.

2e Private residence, Greenville, SC.

3a-c Private residence, Oak Ridge Plantation subdivision, Greensboro, NC; Builder: Gardner & Sons, Inc., Oak Ridge, NC; Mason: Glenn Redmond, Summerfield, NC.

3d Private residence, Wesley Place subdivision, Lewisville, NC.

3e, 4a-b Private residence, Hopeland Farms subdivision, Aiken, SC; Builder: Kaufman Construction, Blackville, SC; Mason: Lee Chavis, Mid South Brick, Warrenville, SC.

4c Private residence, Wessex subdivision, Cary, NC; Designer: Stephen Fuller, Inc., Atlanta, GA; Builder: Lance Youngquist Construction, Inc., Cary, NC.

5a American City Building, Charlotte, NC; Architect: Odell Associates, Inc., Charlotte, NC; Builder: Shelco, Inc., Charlotte, NC; Mason: Leder Masonry, Charlotte, NC.

5b-c Village Hall, Pinehurst, NC; Architect: Anderson Architecture, Southern Pines, NC; Builder: John William Brown Co., Sanford, NC. Mason: Watson Brothers Masonry, Sanford, NC.

5d 400 North Church, Charlotte, NC; Architect: Fishero McGuire Krueger Architects and David Furman Architecture, Charlotte, NC; Builder: Shelco, Inc., Charlotte, NC; Mason: Pyramid Masonry, Charlotte, NC.

6a-b Glenwood Branch Public Library, Greensboro, NC; Architect: J. Andrew Sykes, Greensboro, NC; Builder: J.D. Skidmore, Inc., Greensboro, NC.

6c Barrett Center, Critical Care Pavilion, University of Cincinnati, Cincinnati, OH; Architect: NBBJ, Columbus, OH; Builder: Highland/Maesler, Cincinnati, OH.

6d First Baptist Church (addition), Greenville, SC; Architect: Fluor Daniel, Greenville, SC; Builder: CRS Sirrene, Greenville, SC; Mason: Pettit Masonry, Roebuck, SC.



6d

The right combination of brick and glass to capture sunlight is often a building’s defining element. (6d)

BRICK
The Solid Investment